



LB

230V/110V/50Hz

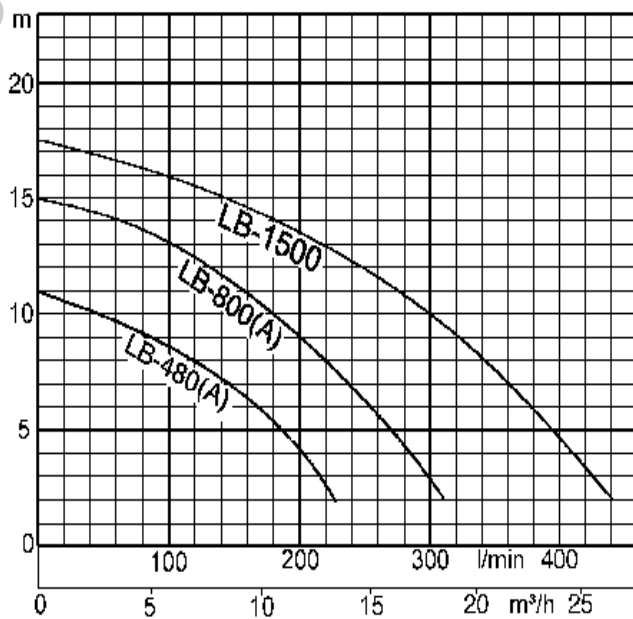
Standard Accessories:

- 1 Cable 10m
- 1 Threaded flange or hose coupling optionally

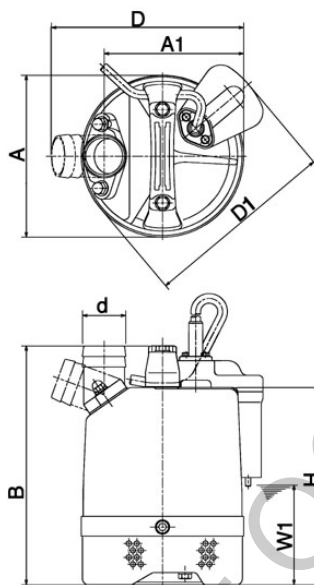


Discharge Bore mm	Model	Motor Output kW	Rated current A	Phase	Head max. m	Capacity max. l/min	Starting Method	Dry Weight kg	Max. solid handling mm	Max. water depth m	Cable Length m	
			110V/230V									
50	LB-480	0,48	6,2 / 2,9	single	11,0	225	capacitor	10,4	6	20	10	
50	LB-480A	0,48	6,2 / 2,9	single	11,0	225	capacitor	11,0	6	20	10	
50	LB-800	0,75	9,6 / 5,0	single	15,0	310	capacitor	13,2	6	20	10	
50	LB-800A	0,75	-- / 5,0	single	15,0	310	capacitor	13,8	6	20	10	
50	LB-1500	1,50	27,6 / 15,4	single	17,5	420	capacitor	33,0	6	50	10	

dry weight of the pump without cable



Dimensions LB-serie



Dimensions in mm

Model	d	A	A1	B	D	D1	H	W1
LB-480	50	187	161	286	221	--	228	50
LB-480A	50	187	161	286	221	223	228	115
LB-800	50	187	160	341	230	--	283	50
LB-800A	50	187	160	341	230	223	283	170
LB-1500	50	187	122	600	--	--	518	80

W1 = continuous running water level